



712H001024 | DEWGOOD

# HIGH CALIBER -ET VG-85

840003251632075 99%RHA-I aAa: 213456 AIAI BB  
TC TY TL TD FREE OF ALL HAPLOTYPES IMPACTING FERTILITY



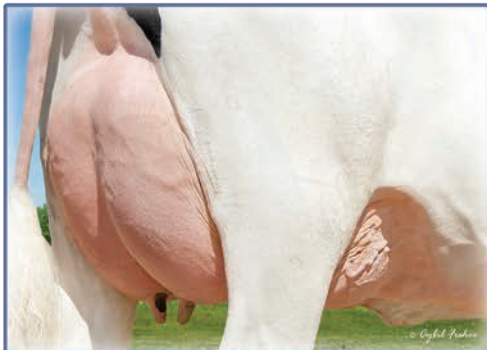
BRED AND OWNED BY: **Dewgood Holsteins**



3RD DAM: SPEEK-NJ T JOYFUL-ET VG-85 DOM



DAM: DEWGOOD 720-816 CASHIER-ET VG-86



3RD DAM: SPEEK-NJ T JOYFUL-ET VG-85 DOM

**SIRE: LADYS-MANOR OVERDO-ET**  
**DAM: DEWGOOD 720-816 CASHIER-ET VG-86**  
*Sired By: PEAK ALTAZAZZLE-ET*  
 1-11 2X 356d 31,260 4.1%F 1,287 3.4%P 1,057

**2ND DAM: DEWGOOD 720 J CRINGLE-ET**  
*Sired By: ABS CRIMSON-ET*

**3RD DAM: SPEEK-NJ T JOYFUL-ET VG-85 DOM**  
*Sired By: BACON-HILL PETY MODESTY-ET*  
 3-09 2X 365d 33,800 4.4%F 1,493 3.5%P 1,169

**4TH DAM: MS JERSEY TUFF 31259-ET VG-85**  
*Sired By: CO-OP DAY TUFFENUFF-ET*  
 1-11 2X 305d 23,380 4.1%F 948 2.9%P 685

5TH-8TH Dams VG or EX

08/24 CDCB		
GTP1®	+3134	79%R
Net Merit \$	+1078	74%R

08/24 HAUSA		
PTA Type	+1.51	79%R
Udder Composite	+2.04	
Feet & Leg Composite	+0.63	

			-3	-2	-1	1	2	3
Stature	0.47	Tall						
Strength	0.09	Strong						
Body Depth	-0.05	Shallow						
Dairy Form	0.73	Open						
Rump Angle	0.75	Sloped						
Rump Width	0.37	Wide						
Rear Legs-Side View	-0.67	Straight						
Rear Legs-Rear View	0.60	Straight						
Foot Angle	1.25	Steep						
Feet & Legs Score	0.68	High						
Fore Udder Attachment	2.86	Strong						
Rear Udder Height	2.05	High						
Rear Udder Width	1.98	Wide						
Udder Cleft	0.41	Strong						
Udder Depth	2.08	Shallow						
Front Teat Placement	1.21	Close						
Rear Teat Placement	0.98	Close						
Teat Length	-0.06	Short						

HEALTH & FERTILITY		CALVING TRAITS		PRODUCTION Dtrs: 0   Herds: 0	
Somatic Cell Score	2.58	Sire Calving Ease	1.2%	Milk	942 80%R
Productive Life	5.9	Daughter Calving Ease	1.0%	Fat (lbs/%)	111 0.28%
Heifer Livability	0.2	Sire Stillbirth	5.1%	Protein (lbs/%)	60 0.11%
Cow Livability	2.1	Daughter Stillbirth	3.6%	Feed Efficiency	267
Dtr Preg Rate	-0.1	Gestation Length	-0.2	Feed Saved	-83
Hfr Conception Rate	1.1	Early First Calving	0.8	Cheese Merit \$	1104
Cow Conception Rate	0.5				
Fertility Index	0.4				

"HIGH CALIBER offers moderate framed cows with great udders, high components, low somatic cell count and GREAT calving ease."

— Dean Good, Dewgood Holsteins, Oconto, WI