



712H001005 | OUR-FAVORITE  
**CHARISMA-ET EX-91**

840003146864329 99%RHA-I aAa: 234165 A2A2 BB  
 TR TP TC TY TV TL TD FREE OF ALL HAPLOTYPES IMPACTING FERTILITY



BRED AND OWNED BY: **Our Favorite Holsteins**  
 Home of the Melvina Cow Family

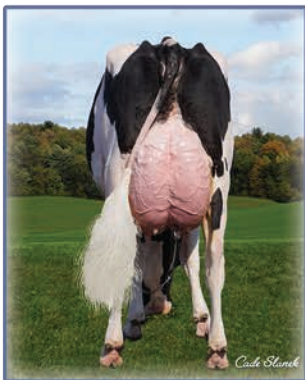


**DAUGHTERS (L-R): OLMAR CHARISMA BOLOXIE EX-90**

**OLMAR CHARISMA COTTONELLE EX-90**

**SAVAGE-LEIGH CHARISMA BETTY EX-91**

**MS ESKDALE CHARISMA LOLITA VG-88**



Dam: OUR-FAVORITE COMPELLING-ET VG-88

**SIRE: WOODCREST KING DOC EX-90**  
**DAM: OUR-FAVORITE COMPELLING-ET VG-88**  
*Sired By: COOKIECUTTER HANG-TIME-ET*  
 1-11 2X 365d 27,580 5.0%F 1,389 3.7%P 1,019

**2ND DAM: OUR-FAVORITE UNLIMITED EX-94 3E**  
*Sired By: MAPLE-DOWNS-I G W ATWOOD-ET*  
 8-01 2X 365d 34,020 4.5%F 1,539 3.5%P 1,190  
 Lifetime 2,206d 181,200 4.7%F 8,431 3.6%P 6,537

**3RD DAM: OUR-FAVORITE OBVIOUS-ET EX-93 2E**  
*Sired By: PICSTON SHOTTLE-ET*  
 6-05 2X 365d 38,110 4.2%F 1,608 3.2%P 1,208  
 Lifetime 1,952d 178,630 4.3%F 7,684 3.4%P 6,107

4TH-10TH Dams VG or EX

**08/24 CDCB**

GTP1®	+2549	92%R
Net Merit \$	+323	85%R

**08/24 HAUSA**

Dtrs: 90 | Herds: 47

PTA Type	+3.44	93%R
Udder Composite	+2.41	
Feet & Leg Composite	+1.68	

			-3	-2	-1	1	2	3
Stature	3.15	Tall						
Strength	1.41	Strong						
Body Depth	2.37	Deep						
Dairy Form	4.03	Open						
Rump Angle	-2.28	HighPins						
Rump Width	2.17	Wide						
Rear Legs-Side View	1.62	Curved						
Rear Legs-Rear View	1.86	Straight						
Foot Angle	2.65	Steep						
Feet & Legs Score	2.36	High						
Fore Udder Attachment	2.86	Strong						
Rear Udder Height	3.71	High						
Rear Udder Width	4.23	Wide						
Udder Cleft	2.09	Strong						
Udder Depth	1.72	Shallow						
Front Teat Placement	1.39	Close						
Rear Teat Placement	1.98	Close						
Teat Length	-0.31	Short						

**HEALTH & FERTILITY**

Somatic Cell Score	3.20
Productive Life	0.4
Heifer Livability	0.3
Cow Livability	-1.9
Dtr Preg Rate	-2.5
Hfr Conception Rate	0.9
Cow Conception Rate	-1.9
Fertility Index	-1.6

**CALVING TRAITS**

Sire Calving Ease	3.1%
Daughter Calving Ease	2.5%
Sire Stillbirth	7.0%
Daughter Stillbirth	7.1%
Gestation Length	1.1
Early First Calving	1.1

**PRODUCTION Dtrs: 140 | Herds: 68**

Milk	888	94%R
Fat (lbs/%)	48	0.05%
Protein (lbs/%)	37	0.03%
Feed Efficiency	123	
Feed Saved	-145	
Cheese Merit \$	325	

“CHARISMA is an all-around bull with high type that should fit into a lot of breeding programs.”  
 — Todd Stanek, Our-Favorite Holsteins, Fall Creek, WI