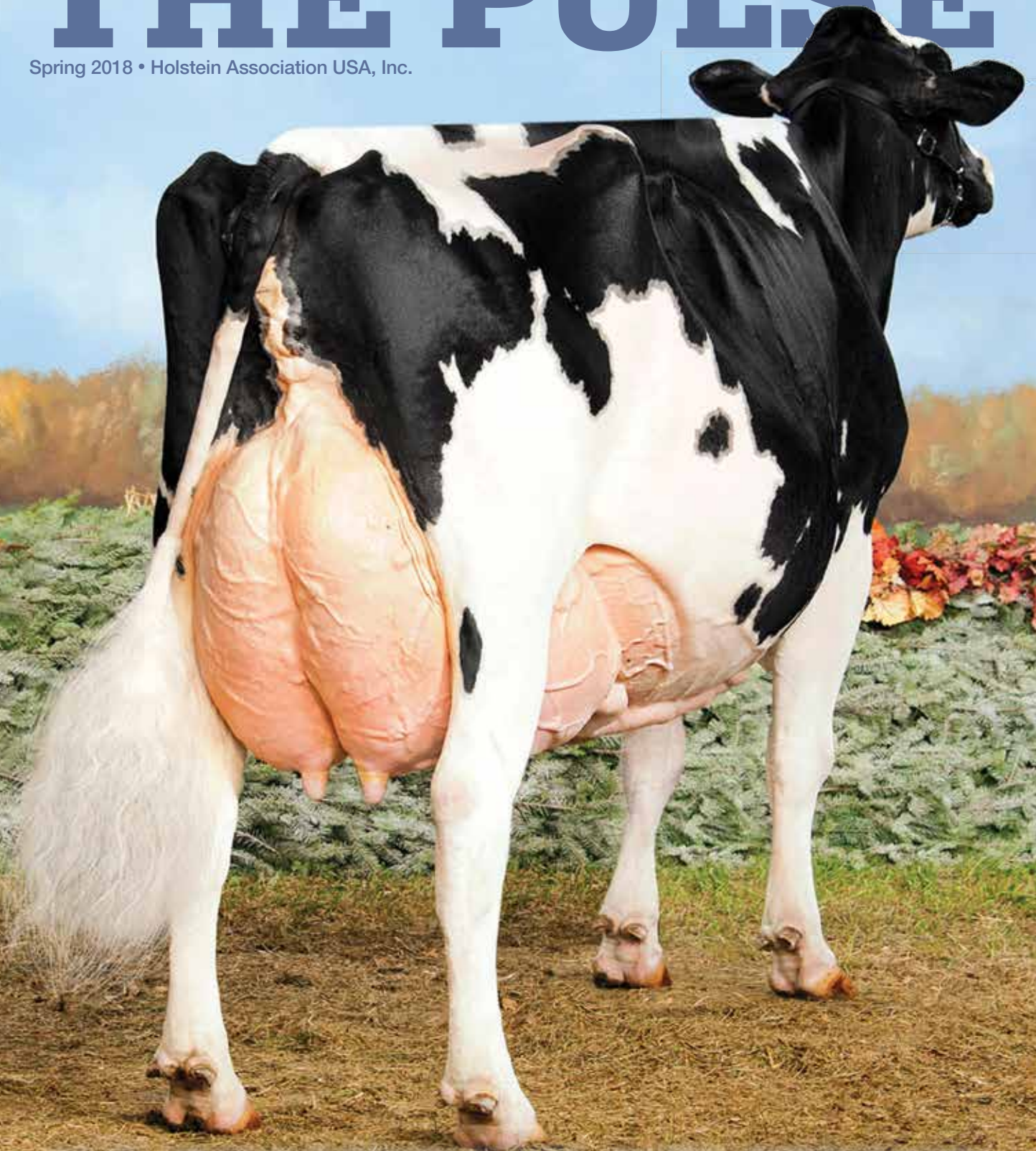


# THE PULSE

Spring 2018 • Holstein Association USA, Inc.



**U.S. REGISTERED HOLSTEINS®**

THE WORLD'S PERFECT COW

The Holstein Pulse is proudly sponsored by





# Herds of Excellence

**H**olstein Association USA is proud to present our 2017 Herds of Excellence award recipients. These seventeen herds have all achieved the rigorous criteria to qualify for this honor.

Starting in 2017 the award is now broken into three herd size divisions based on the number of cows included in production averages. The categories are as follows:

- Division 1: 500+ cows
- Division 2: 100-499 cows
- Division 3: 10-99 cows

Herds receiving the award must:

- Have classified within the last year and have an age adjusted classification score of 83 points or higher;
- Have at least 70 percent of the herd homebred;
- Be enrolled in the Association's TriStar<sup>SM</sup> program

Additionally, qualifying herds must meet the following production criteria:

- 10 to 99 cows – 25 percent above breed average Mature Equivalent for milk, fat and protein
- 100 to 499 cows – 20 percent above breed average Mature Equivalent for milk, fat and protein
- 500+ cows – 15 percent above breed average Mature Equivalent for milk, fat and protein

**CONGRATULATIONS  
TO THE  
FOLLOWING HERDS!**



*The Zwald Family: Steve holding Abby, Annette holding Katelyn, Bob, Kay, Tom holding Hannah, and Ashley holding Noah*

**DIVISION 1 • 500+ COWS**

**The Zwald Family • Hammond, WI**

Two-Year Honoree • 97.7% Homebred  
Milk: 32,168 Fat: 1,223 Protein: 1,036  
Average Classification Score – 84.6

The Zwald family's Registered Holstein operation has grown and developed high quality Holstein genetics since the farm began in 1962.

Today, they milk a herd of 726 cows, three times a day, in a double-10 parallel parlor. Raising healthy cows that are fed a high-quality ration allows cows to produce to their highest genetic potential, Bob explains. Animals are housed in sand-bedded freestyle barns to keep them stress-free and comfortable.

As the family operation has expanded, they've placed a larger emphasis on the herd's genetic potential. The Zwald family stresses high production, good udders and sound feet and legs.

The first cow to have a big genetic impact was Bomaz Valiant Daphne VG-88 a Gold Medal Dam<sup>SM</sup> (GMD) and Dam of Merit<sup>SM</sup> (DOM). Her offspring are trouble free and produce at high levels.

"We don't have a goal to necessarily have the highest classifying cow or the best show cow," Bob says. "We breed for the working ladies with the goal they can give 100 pounds of milk every day."

With the adoption of genomic technology, Bomaz Inc. is able to identify and implement genetic progress faster than ever before.

Bob relies on Enlight<sup>®</sup>, a comprehensive tool offered by Holstein Association USA and Zoetis, to help him monitor genetic information on a daily basis. He uses Enlight for mating and culling decisions and selecting animals for future embryo transfer work.

Bomaz Inc. is operated by Bob and his wife, Kay, and their family: daughter, Annette, and son-in-law, Steve Schalla; and son, Tom, and daughter-in-law, Ashley. Bob's proudest moment is being able to work alongside his family: "I think faith and family are the biggest things, and beyond that, success will come."



## CO-VALE HOLSTEINS



Brad Cates was the official judge during the Fryeburg Fair.

DIVISION 1 • 500+ COWS

### Bradley Cates • Preble, NY

First-Year Honoree • 92.2% Homebred  
Milk: 31,849 Fat: 1,233 Protein: 997  
Average Classification Score – 86.7

Tucked into the rolling hills of upstate New York's Finger Lakes sits a fourth-generation Registered Holstein herd.

Brad Cates and his family own and operate Co-Vale Farms, where they focus on breeding productive, efficient cows. They milk 520 Registered Holsteins, twice a day, in a flat barn parlor.

Brad returned to the farm after college and made cow comfort the forefront of his farming philosophy. He says it has been the greatest improvement they've made since he joined the operation.

In addition to cow comfort, Brad focuses on being environmentally sustainable by finding solutions to decrease the amount of manure they spread on their limited land. Also, in the name of sustainability, they breed for a smaller Holstein cow that's more efficient.

Herdsmen Brian Dunham is crucial to the farm's breeding program, Brad says. He's responsible for the majority of the mating decisions, and ensures the herd is headed in the right direction.

"We feel every mating has the opportunity to be amazing," Brad says. "We focus on breeding for type and feeding for milk."

Among their prefix, Co-Vale Dempsy Dina 4270-ET EX-95 has achieved the most notable success. For Brad, Dina accomplished their goal to breed cattle that could compete on the ultimate stage. She was Grand Champion at the 2017 Royal Winter Fair and Reserve Grand Champion during the 2017 World Dairy Expo.

Brad says Dina is every breeder's dream, and it's a true honor to have their prefix on her name.

Co-Vale Holsteins have also been honored with numerous All-Americans, All-New York's and All-Canadians. Their 108.6 BAA tops the "Over 150" herd size category for 2017.

A true family operation, Brad and his wife, Sarah, own Co-Vale Farms along with his mother, Georgia.

## DINOMI HOLSTEINS



The Migliazzo Family: Vincent, Dino, Loren and Dante

DIVISION 1 • 500+ COWS

### The Migliazzo Family • Atwater, CA

First-Year Honoree • 96.9% Homebred  
Milk: 37,473 Fat: 1,396 Protein: 1,194  
Average Classification Score – 83.0

Located in California's Central Valley, Migliazzo and Sons Dairy is surrounded by agricultural diversity.

The family operation was founded by Lawrence and Irene Migliazzo, and their facility was built in 1979. Today, Migliazzo and Sons Dairy milks 729 Registered Holsteins in a rapid-exit herringbone parlor.

Under the Dinomi prefix, the family has experienced many benefits from being involved with registered genetics and Holstein Association USA.

"We are looking to breed a better herd of highly performing, more profitable cows," Dino Migliazzo says. "Over the years, the Association has been a big part of having the ability to expand our herd, facilities and land base."

Dino adds, breeding a good herd of cows has never been easier. They find value in using Enlight<sup>®</sup>, to help with breeding decisions and accurately keep track of their herd's genetic potential.

The Migliazzo family breeds for high components and they pay close attention to the net merit index when making breeding decisions. Migliazzo's milk is shipped to Hilmar Cheese, so Dino stresses the importance of high components for cheese production. They are also attentive to health traits, DPR and somatic cell count information.

Always looking ahead, Dino says for the next generation, they want to have a whole herd that tests north of four percent of butterfat, 3.5 percent for protein and produces more than 100 pounds a milk per day.

Due to California's dry and hot summers, the family upgraded their facilities with the latest technology. They added fans, shade and additional cooling in the barn. The team at Dinomi Holsteins manages their herd so that every animal has the opportunity to maximize their genetic potential.

Migliazzo and Sons Dairy is a partnership between Dino and his wife, Alicia, and their sons, Loren and Vincent; and Dino's brother and sister-in-law, Dante and Kristi.



## DOUBLE D DAIRY



Harold Agresti, Dominic Agresti-Assali

DIVISION 1 • 500+ COWS

### The Agresti Family • Ceres, CA

Two-Year Honoree • 90.6% Homebred  
Milk: 32,761 Fat: 1,210 Protein: 1,008  
Average Classification Score – 84.7

California's Double D Dairy is an example of the motivating power of family legacy and a passion for quality dairy cattle.

The late Danny Agresti had a dream of establishing his own dairy and living close to his cows. Danny's father, Harold, and uncle, Donald, carried on Danny's dream when his life was tragically cut short.

Double D Dairy was built on the hope to keep Danny's aspiration alive.

The dairy currently milks 1,963 Registered Holstein cows and is located between Fresno and San Francisco.

In 2005, they purchased 1,000 cows and built a 60-cow rotary parlor to accommodate their new herd. The Agresti family milks on two other locations, one has a double-10 herringbone parlor and the other a double-8 herringbone parlor.

The Agresti family takes pride in using top genetics to create their ideal Holstein cow.

The herd star is A-L-H Atwood Diamond-ET EX-92. Acquired in 2013, Diamond always transmits her stylish type. With an impressive PTA of 4.29, her son, Agresti Dannys Dream-ET, is among the highest PTAT animals in the breed and the number one PTAT bull born in 2016.

They select bulls with over 1,000 pounds of milk, two points on type, feet and legs, and udder, with a DPR of over three points.

Dominic Agresti says every day they see the efficiency their Holsteins possess and the ability to feed directly for components.

"Technology is a great tool to improve herd management, but also being around constantly allows the best treatment decisions to be made," Dominic says. "Fortunately, with Manuel as our herdsman, he is the reason why we are where we are today."

Double D Dairy is managed by Harold and Marlene Agresti with their grandson, Dominic Agresti-Assali, and herdsman, Manuel Botelho.

## LEGACY FARM LLC



The Schloneger Family: Noah, Reuben, Rodney, Brenda, Josh, and John

DIVISION 1 • 500+ COWS

### The Schloneger Family • Shell Lake, WI

First-Year Honoree • 83.4% Homebred  
Milk: 32,084 Fat: 1,316 Protein: 1,054  
Average Classification Score – 83.7

Relatively new to registering animals with the Holstein Association USA, Legacy Farm LLC is a unique story. They started registering a small percentage of calves in 2011 and in seven years have become a Herd of Excellence.

Legacy Farm LLC, established in 1976, uses Registered Holsteins to pave the way to an exceptional herd. Component values are a high priority when making mating decisions for herd manager Reuben Schloneger.

Reuben's ultimate goal is to have efficient cattle that produce high fat and protein, with good udders, feet and legs and functional type. While Reuben does use some new genomic sires, he incorporates a number of proven sires in his breeding program.

"I am a big fan of good functional type in cows," Reuben says. "Cows with depth and width, and strength. That's where we get milk production."

A prominent cow for Legacy Farm is Legacy-SCH Gerard 7501 EX-91 DOM. A cow still in the milking herd, 7501 was their first recorded Dam of Merit in August of 2015. Currently her daughter, Legacy-SCH Gillespy 8057-ET EX-91, is +2286 for milk and +2.74 in the udder.

Legacy Farm has several daughters from 8057 they look forward to developing. Cows like these embody what the Schloneger family strives to achieve on the farm.

What first started as a way to market his registered bulls has turned into much more. Today, they are registering 99 percent of their heifer calves—and are eager to see what progress they can make with each calf. They milk 785 Registered Holstein cows.

Legacy Farm is owned by Reuben and his parents, Rodney and Brenda, and brothers, Josh, John and Noah. Reuben's brothers oversee the crop production, feeding and manure management.

The Schloneger family is truly making a legacy with Registered Holsteins.



## SIEMERS HOLSTEIN FARM INC.



Dan, Paul holding Siemers Gsun Haya-Dream-ET, and Sherry Siemers

DIVISION 1 • 500+ COWS

### The Siemers Family • Newton, WI

Two-Year Honoree • 97.1% Homebred  
Milk: 36,359 Fat: 1,373 Protein: 1,075  
Average Classification Score – 85.3

More than a century ago, the Siemers family made an influential decision: they purchased the farm's first Registered Holstein calves. Since 1908, they've guided Siemers Holstein Farm to success, both in and out of the showing.

"The entire team at Siemers Holsteins is honored and humbled to be named a 2017 Herd of Excellence recipient," Dan Siemers states. "We work hard every day to do what we can to both preserve and move forward in our genetic endeavors."

Using passion and perseverance, Siemers Holstein Farm strives for excellence in the dairy industry. Their goal is to make every generation better than the last—and over the years, they've bred more than 1,000 Excellent and Very Good cows.

To achieve success, the Siemers focus on different avenues when making breeding decisions. They breed for a spectrum of cattle: high-index cattle, show cattle, outstanding registered commercial cows, and Red and White Holsteins.

Dan says their best genetic cows are also their best production cows. They look for strength in the cow's conformation, so their herd will give more milk for longer periods of time.

On Siemers Holstein Farm, they milk 2,594 cows in a double-36 parallel parlor—three times a day.

Dedicated to feeding the best, Siemers produce their own haylage, corn silage, wheat and corn on 5,000 acres. Quality nutrition, along with industry-leading genetics, has allowed Siemers Holstein Farm to grow and progress through the years.

In 2017, the family received a Wisconsin Master Agriculturist award for their hard work, dedication and success in farming and exemplary leadership.

The farm operates as a team, with fifth generation siblings Dan, Paul and Sherry, and their families all working together. The family looks forward to the sixth generation continuing their Herd of Excellence.

## KOEPKE FARMS INC.



The Koepke Family: Kim, John, Dave, and Jim

DIVISION 2 • 100-499 COWS

### The Koepke Family • Oconomowoc, WI

First-Year Honoree • 100% Homebred  
Milk: 35,448 Fat: 1,476 Protein: 1,062  
Average Classification Score – 83.9

Koepke Farms Inc.'s goal is to have long lived, healthy cows that produce large volumes of high quality milk for several generations.

Founded more than 80 years ago, the family operation has stood the test of time through a dedicated focus on milk production and improving the genetics in their Registered Holstein herd.

The farm has grown from an initial 40 acres to today's 1,250 acres. The Koepke family milks their 337-cow herd three times a day in a double-10 herringbone parlor.

Owner Dave Koepke says their mating decisions have always favored high milk production bulls—and it shows. Koepke Farms has five cows with more than 300,000 pounds of lifetime-milk.

Koepke K0017229-1660 VG-85 DOM, known to many as "Granny," is considered at the top of the family's special cows. The 17-year-old cow produced 429,132 pounds of milk in her lifetime. At one time, Granny held the world record for lifetime milk production.

Skirting the metropolitan Milwaukee area, Koepke Farms has found a way to add value to their milk. In 2010, they used a Wisconsin Value Added Producer Grant to establish LaBelle Cheese.

John Koepke and his wife, Kim, manage the cheese production. Today, the cheese is in 50 local and chain grocery stores in the Milwaukee and Madison areas.

"We wanted to make an identity with our community that would embrace a product that was locally made, and people could identify with it," John says. "It's rewarding to see happy customers, and start the dialogue between how we farm and how we take care of the animals and land."

Selecting for bulls that excel in cheese-merit dollars (CM\$), Dave looks for bulls 900 or higher for CM\$. On the female side, they seek out average-size stature cows with somatic cell counts under 29,000.

Today, Koepke Farms Inc. is a partnership between brothers Alan, Dave, James and James' son, John.



## KOESTER DAIRY INC.



The Koester Family: Back row-Cynthia, Lance, Brent, Bria, Kyle, Cindy; Front row-Levi, Lydia, Amber, Dan

DIVISION 2 • 100-499 COWS

### The Koester Family • Dakota, IL

Two-Year Honoree • 97.0% Homebred  
Milk: 35,254 Fat: 1,390 Protein: 1,117  
Average Classification Score – 85.4

Forward and steady. That's how Koester Dairy operates. Through gradual expansion and constant development, owner Dan Koester has grown the family operation using improved genetics and management. What started as a 28 grade Holstein herd, is now up to 310 Registered Holstein cows.

After graduating from college, Dan set a goal to someday own all Registered Holsteins. The first step toward that dream was in the early 70s when he purchased his first Registered Holstein.

Today, the registered cows increase and accelerate genetic improvement for Koester Dairy. The herd is milked in a double-12 parallel parlor, three times a day. They ship their milk 30 miles to Stockton Cheese in Stockton, Illinois.

As the herd grew, the Koester family focused on breeding functional, high-producing cows.

They are currently using bulls with over 900 net merit with really good type and a strong pedigree. As they mate their herd they especially watch DPR, somatic cell count and components.

Koester Dairy also finds advantage in genomically testing all of their heifer calves. "Over time, we are breeding for an efficient cow, who will produce more and have better type," Dan says. "With genomics, we don't run into too many cows that aren't purposeful anymore."

Dan uses the genomic test to identify where the heifers rank within the herd, which gives insight into deciding which heifers to flush and use as recipients.

Building on progress made over the last three decades, and with powerful genetic data at their fingertips, Koester Dairy has made significant improvements in overall production and functionality of the herd—and is poised for the future.

Koester Dairy is owned by Dan and his wife, Amber, together with their family: son, Lance, and his wife, Cynthia; sons, Kyle and Brent; and daughter, Brea.

## MAPLELANE-MANOR FARM



Jay Liddington, Carolyn Turner, John Young

DIVISION 2 • 100-499 COWS

### Benjamin F. & Carolyn A. Turner • Apulia Station, NY

Five-Year Honoree • 88.3% Homebred  
Milk: 33,190 Fat: 1,347 Protein: 1,081  
Average Classification Score – 85.6

Just 15 miles from Syracuse, New York, is a maple tree-lined lane leading to a white manor house. It's the site of Maplelane-Manor, where Ben and Carolyn Turner built their 100-cow tiestall barn in 1982.

Through the years, Maplelane-Manor has held numerous New York state production records for milk, fat and protein production, along with maintaining one of the highest rolling herd averages in the state.

"Each day, I am excited to drive to our farm and begin the morning chores," Carolyn says.

That passion and dedication is the impetus for making every generation better than the last.

Ben is a retired veterinarian, and Maplelane-Manor relies on his expertise to make sound herd management decisions. Their breeding strategy revolves around improving type and production; cows with beautiful udders and long-lasting power.

Maplelane-Manor Emerson Ed VG-88 GMD is the herd's choice foundation cow. A strong will to milk, Emerson made three records over 50,000 pounds.

For Maplelane-Manor Farm, the past 36 years has been about building a herd of cows that, when they walk through the barn, the team can be proud of.

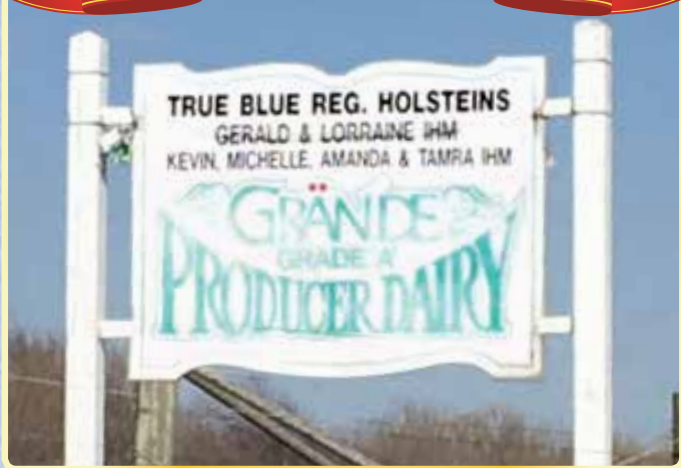
Alongside Carolyn, there are two key employees: John Young, Carolyn's son, and Jay Liddington, an employee for more than 20 years. John is the man behind the field and crop work, while Jay works mainly with the animals.

In addition to the full-time employees, Ben and Carolyn hire many high-school students. Their goal is to help students develop life skills that will assist them in the future.

Carolyn strives to create a work environment that people will enjoy, she says, and make the farm a place someone wants to come to work.



## TRUE-BLUE HOLSTEINS



DIVISION 2 • 100-499 COWS

### Gerald & Kevin Ihm • Barneveld, WI

First-Year Honoree • 94.9% Homebred  
Milk: 32,794 Fat: 1,251 Protein: 1,008  
Average Classification Score – 84.2

The founder of True-Blue Holsteins in southern Wisconsin, Gerald Ihm says he's admired the Holstein cow his entire life.

After spending two years in the U.S. Army, he and his wife decided to plant roots on a dairy farm of their own. Shortly after, they experienced first-hand the merchandising and progressive value that Registered Holsteins have to offer.

"Dairy farms are the backbone of the country," Gerald says. "There is a lot of people that depend on our milk for meals every day. I was glad we could do our part in providing a wholesome product for the surrounding area."

Son, Kevin, joined the operation in 1993, bringing with him a good eye for dairy cattle, Gerald says. From that point, the dairy's profit increased.

Kevin focused on ways they could enhance the cow's environment and identify sires to increase the offspring's milk-production potential.

A cow central to the family's success was True-Blue Duster Ihm Jen VG-85 GMD DOM. Jen set a national record for 2-year-old cows by producing 61,030 pounds of milk, 3.9 percent fat and 3.2 percent protein.

True-Blue Holsteins has been honored on the Progressive Breeders' Registry for eight years and recognized as a Progressive Genetics Herd for 22 years.

Just 30 miles from Madison, True-Blue Holsteins is settled in a prime location. Gerald mentions the rolling hills are ideal for contour farming and the rich valley makes a great pasture.

Due to an unfortunate illness that struck Kevin in 2017, they made the decision to sell the cows, land and machinery. However, their Registered Holstein Herd of Excellence award is an honor that will carry on forever.

## APPEALING HOLSTEINS



The Cooper Family: Max, April, Scott holding Appealing Active Holly-ET, and Grant

DIVISION 3 • 10-99 COWS

### S. Scott & April D. Cooper • Delta, PA

Two-Year Honoree • 97.3% Homebred  
Milk: 38,374 Fat: 1,467 Protein: 1,127  
Average Classification Score – 86.2

Appealing Holsteins located in York County, Pa., is a herd backed by strong cow families—and that base is paving the way for the next generation.

Early on, Scott and his wife, April, shared a goal to have their Holstein herd originate from the best pedigreed animals they could find. Scott believed that Registered Holsteins had more marketing potential than other breeds, and from there, their operation was born.

That belief has never wavered, and today, Scott enjoys watching his cow families develop into the herd's next generation. That newborn calf could be the next best one.

"There is no question to me that if I use better bulls on cows from proven families, those cows will perform higher," Scott says. "Our goal is easy – to maintain the cow families while increasing production and type."

The herd is built on three main cow families, Appealing Shottle Hannah-ET VG-86 GMD DOM, Windsor-Manor Outside Mink VG-85 GMD, and Ladys-Manor Ruby D-ET EX-90 GMD DOM.

For Scott, these families had it all—high lifetime production, longevity, maternal lines of Gold Medal Dams and Dams of Merit.

The Cooper family has a unique milking schedule; cows are milked every 10 hours. Switching from three times a day to every 10 hours has allowed them more opportunity for off-farm activities.

Appealing Holsteins was the top herd for protein in their DHI association. Choosing sires that are high in components is an important part of their breeding program.

Appealing Holsteins is supported by a team effort from Scott and April alongside their children, Jason, Emily, Max and Grant. The future looks bright for the next generation of Coopers and their herd.



## ARETHUSA FARM LLC



George Malkemus and Anthony Yurgaitis

DIVISION 3 • 10-99 COWS

**George Malkemus & Anthony Yurgaitis • Litchfield, CT**

First-Year Honoree • 78.9% Homebred  
Milk: 34,988 Fat: 1,443 Protein: 1,066  
Average Classification Score – 89.2

About a hundred miles north of New York City, Arethusa Farm is preserving a farming tradition while supplying urban consumers with quality, fresh dairy products.

The dairy's story begins in 1988, when George Malkemus and Anthony Yurgaitis, owners of a high-end designer shoe company, Manolo Blahnik, purchased farmland in Litchfield, Conn. Today, they have restored Arethusa Farm to its former glory: a fully functioning dairy farm. They milk 35 Registered Holsteins, twice a day, in a tiestall barn.

At Arethusa Farm, they strive for cows that are high-scoring and will hopefully stand at the top in the showring. They also have a passion for breeding great pedigreed cattle, with high production and longevity.

One of the most prominent cow families on the farm stems from Hillcroft Leader Melanie EX-96 3E, the 2004 Supreme Champion at World Dairy Expo. Arethusa Dundee Mallory-ET EX-94 2E, a daughter of Melanie, is the female that increased their interest in genomics.

"Mallory has made many great show cows that are square built, with good udders and feet and legs," Farm Manager Matt Senecal says. "We stick to making a functional cow that is going to produce a high-quality product."

Arethusa Farm is the area's only dairy and has a processing plant that produces several farm-to-table dairy products for their retail stores and award-winning restaurant. They bottle their own milk, produce butter, cheese, yogurt, sour cream, cream cheese and ice cream.

Products are distributed throughout New England in wholesale markets, and have recently expanded into Philadelphia and Washington D.C.

George and Anthony look forward to the future of their farm as they continue to produce delicious products from their Registered Holstein cows.

## B-LONG HOLSTEINS



Bret is at the halter of B-Long Tootsie Pop Twix, Brenda holds B-Long Cryptonite, and Bruce is with B-Long Wintermint

DIVISION 3 • 10-99 COWS

**Bruce, Brenda & Bret Long • New London, WI**

Seven-Year Honoree • 100% Homebred  
Milk: 37,665 Fat: 1,330 Protein: 1,153  
Average Classification Score – 87.7

For nearly 30 years, B-Long Holsteins philosophy has been "Keeping cows fed with a high-quality forage means they will produce ample amounts of milk and stay healthier."

Continuous improvement is a high priority for B-Long Holsteins, where they milk 52 cows twice a day in their tiestall barn.

Bruce says he sticks with three C's in his dairying strategy: cows, comfort and consume. When B-Long Holsteins makes changes on the farm, he says, it is almost always to improved cow comfort. That leads to greater feed consumption and overall herd health.

When they started, their rolling herd average was 18,000 pounds of milk and they had a BAA of 102. They have increased their rolling herd average by 19,000 pounds of milk and their BAA to 109.

Registered Holstein genetics are the secret to the family's accomplishments. Their ultimate goal is to breed large, powerful cows with big frames, and plenty of strength and width.

For the Long family, B-Long BW Grapefruit VG-86 GMD DOM was the complete package. No longer in the herd, Grapefruit had the will to milk and a perfect frame. Many of Grapefruit's offspring were marketed internationally 15 years ago.

"Grapefruit is special since she was the first homebred family that flourished," Bruce says. "We hit the right sires at the right time. She looked good, milked well and held her own with type traits."

Not only does Bruce have a drive for owning Black and White homebred beauties, he is passionate about connecting with fellow breeders. He knows the friends he made will last a lifetime.

Bruce and his wife, Brenda, operate B-Long Holsteins alongside their eldest son, Bret.



## DOORCO HOLSTEINS



*The Vandertie Family: Dan, Julie, Austin, and Bridget*

DIVISION 3 • 10-99 COWS

### **Daniel L. Vandertie • Brussels, WI**

Four-Year Honoree • 100% Homebred  
Milk: 34,194 Fat: 1,322 Protein: 1,042  
Average Classification Score – 88.7

Settled on the border of tourist country in Door County, fifth-generation farmer Dan Vandertie and his family operate Doorco Holsteins. It's home to 33 registered cows that are milked two times a day.

Walking through the tiestalls, it is easy to recognize the herd's strength. Dan looks for long-lasting cows that have the will to milk and strong frames, including wide front ends.

Doorco Duster Albany EX-90 2E GMD DOM is a cow that carries those traits. Albany had more than 147,000 pounds lifetime milk and produced three Excellent daughters that were EX-92 and multiple 'E'.

Dan estimates 90 percent of his current herd descends from the Albany family.

"Our family believes that registering our Holsteins and building on the pedigrees adds value," Dan says. "We are always trying to improve the herd, not just in milk production, but every aspect."

During their last classification, Doorco had 11 Excellent and 18 Very Good cows with a BAA of 111.2. To achieve their breeding and production goals, they rely on Holstein Association USA programs and services.

As a child, Dan remembers being excited when the Holstein Association USA's Red Book™ would arrive in the mail.

He exhibits the same enthusiasm today, as he uses the tool to develop mating strategies. The Red Book gives him a clearer picture of how the sires will perform, leading to greater consistency within the herd.

For Dan and his wife, Julie, their Holstein story began in 1987, when they married and purchased the farm from Dan's parents.

They have three children, Karlee, Bridget and Austin. Their son will graduate from high school this summer and has plans to return to the operation.

## EVER-GREEN-VIEW HOLSTEINS, LLC



*The Kestell Family: Chris, Gin, Jennifer, and Tom*

DIVISION 3 • 10-99 COWS

### **Thomas J. Kestell • Waldo, WI**

Eight-Year Honoree • 83.8% Homebred  
Milk: 41,247 Fat: 1,557 Protein: 1,242  
Average Classification Score – 88.8

A name recognized in dairy circles around the world, Ever-Green-View Holsteins is known for elite genetics and outstanding performance.

Ever-Green-View Holsteins is nestled 15 miles from Lake Michigan. For 60 years, Tom Kestell has dedicated his life to the Registered Holstein cow.

Genetics is their first priority, Tom says, he believes it's important to use a number of different good bulls.

"You have to breed away from the weaknesses in the cow," Tom explains. "You will be in the driver's seat if you use a combination of good udder bulls, strong feet and leg bulls, and above all, positive milk and component bulls."

The Elsie cow family has been at the heart of the Kestell's herd for more than 30 years.

Ever-Green-View Elsie-ET EX-92 2E GMD DOM produced two cows that set the National Single-Lactation Milk Production Record: Ever-Green-View My 1326-ET EX-92 2E GMD at 72,120 pounds of milk, and Ever-Green-View My Gold-ET EX-93 with 77,480 pounds. Elsie also had an offspring named as a number one GTPI proven international sire, Flevo Genetics Snowman-ET.

Ever-Green-View genetics are in demand domestically and abroad. Tom and his wife, Gin, spend a large part of their time devoted to merchandising, an effort that makes up three quarters of their income. They've sold genetics to more than 30 countries.

For Tom, the most enjoyable aspect is when he receives a call about how well his cows are performing for the buyers. The Ever-Green-View team breeds high-quality Registered Holsteins that are admired around the world.

Tom and Gin are in partnership with their youngest son, Chris, and his wife, Jennifer.



## GRAFTON COUNTY FARM



Brian Tillotson and Ben White

DIVISION 3 • 10-99 COWS

### North Haverhill, NH

First-Year Honoree • 100% Homebred  
Milk: 35,483 Fat: 1,392 Protein: 1,086  
Average Classification Score – 83.5

Grafton County Farm, settled along the Connecticut River, between the Green and White National Forests, is the only government-operated farm in New England.

Registered Holsteins are an important part of Grafton County Farm. They milk 73 Holsteins, twice a day, in a tiestall barn. Within the last six years, their rolling herd average has increased 10,000 pounds.

The farm is surrounded by 750 acres, 250 which are tillable. Situated along the river, the land is high quality and ideal for producing their own forages.

Herdsmen Ben White says when making breeding decisions, he looks for proven bulls and choosing sires that are at least 2.5 for type, while paying close attention to feet and legs. A herd favorite is Grafco Penosh 448 EX-91. In her last record, she made 36,000 pounds of milk. Ben admires her type, outstanding feet and legs, and udder. To him, she is the total package.

The farm, established more than two centuries ago, continues to grow. In addition to the dairy, they also raise pigs and grow produce for their farm stand.

Grafton County Farm participates in a program providing job opportunities for inmates in the New Hampshire County Jail. Inmates help with a wide range of farm chores including feeding calves, cleaning out barns, helping with milking and fixing equipment.

“Being able to teach the inmates that there are other places you can go and other things to be involved in is the most powerful tool,” Ben says.

Job training is a central goal of the program, and many inmates become employed on dairy farms upon being released.

Grafton County Farm is operated by farm manager Don Kimball, Ben and the farm’s assistant Brian Tillotson.

## OCEAN VIEW GENETICS



Pam and Daryl Nunes stand with Ocean-View Mandel Zandra

DIVISION 3 • 10-99 COWS

### Daryl & Pam Nunes • Deerfield, WI

First-Year Honoree • 88.5% Homebred  
Milk: 36,969 Fat: 1,400 Protein: 1,062  
Average Classification Score – 90.2

An ocean view would be an unlikely sight in Wisconsin’s Dairyland, but for Daryl and Pam Nunes, it’s the perfect description for their Holstein herd.

Daryl grew up in California on Ocean View Farms, and Pam is from Wisconsin’s Dun-Did Holstein herd. When they married, she moved West and established their own herd in California alongside Daryl’s father.

In 2010, the couple made the difficult decision to move their herd from California to Wisconsin, where they now operate Ocean View Genetics.

Focused on breeding the finest Registered Holstein cattle, Daryl and Pam believe that bulls come and go, but cow families live on forever. The herd has a BAA of 115.5.

“At Ocean View Genetics, we believe in results, not predictions,” Pam says. “We feel the best cows get better with age and can produce, reproduce and outproduce themselves. Lifetime production is our gold standard.”

Almost every animal in their herd can be traced to Ocean View’s foundation cow: Ideograph Burkgov Steps EX-90 2E GMD. Although she is no longer in the herd, Steps left her mark. Ocean-View Sexation was the son of Steps, and his impact is truly prolific as he produced high-type families. Many animals in the top genomic lists trace back to Sexation.

Ocean-View Mandel Zandra EX-95 2E GMD DOM was one of the most impactful cows in their herd and to many others worldwide. Zandra captured a lot of attention in the showring with her style and passed that along to her 17 Excellent offspring.

In October 2017, Daryl and Pam sold their herd and currently have a small group of donor cows and young calves. Their plan is to house a limited group of high-type individuals.

The future of Ocean View Genetics is focused on maintaining an elite donor pool, producing embryos and top-end calves.